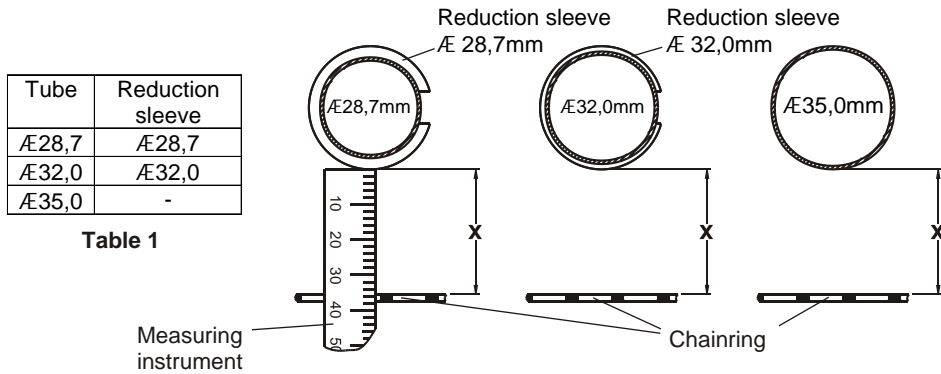


Chain guide assembly



Measure the seat tube diameter and apply the correct reduction sleeve (table 1).



| Tube | Reduction sleeve |
|----------------|------------------|
| $\text{Æ}28,7$ | $\text{Æ}28,7$ |
| $\text{Æ}32,0$ | $\text{Æ}32,0$ |
| $\text{Æ}35,0$ | - |

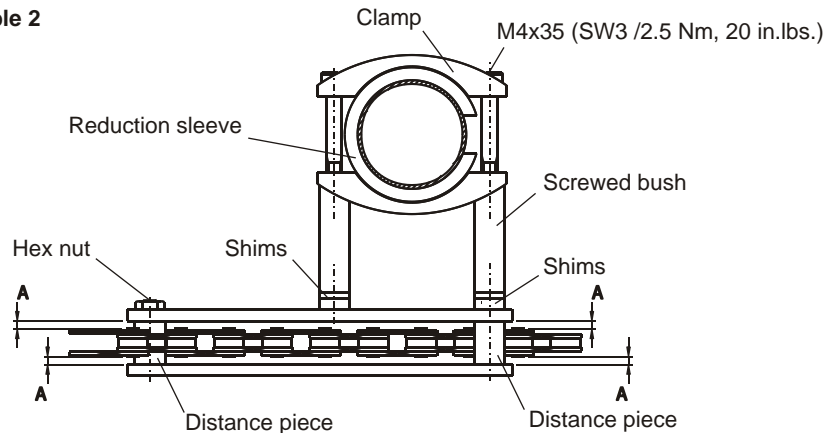
Table 1

Picture 1

| X [mm] | 1mm shim | 2mm shim |
|--------|----------|----------|
| 33 | 1 | 0 |
| 34 | 0 | 1 |
| 35 | 1 | 1 |
| 36 | 0 | 2 |
| 37 | 1 | 2 |
| 38 | 0 | 3 |
| 39 | 1 | 3 |
| 40 | 0 | 4 |
| 41 | 1 | 4 |
| 42 | 2 | 4 |

Measure distance X between seat tube with reduction sleeve and chainring (picture 1). See table 2 for required number of shims to mount the chain guide in the correct position. Example: X=35mm, one 1mm shim and one 2mm shim are required in front and rear position (picture 2). Number and overall thickness of shims must be the same in both positions.

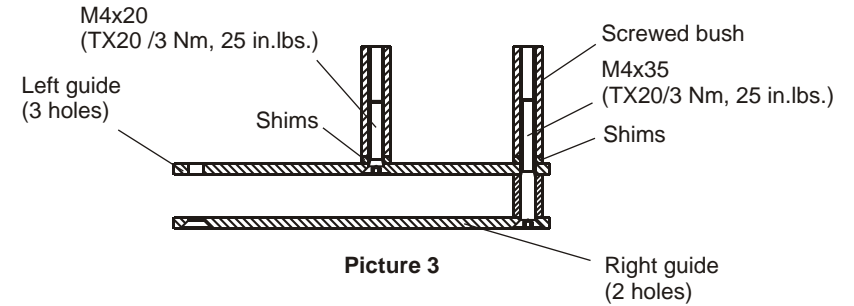
Table 2



Picture 2



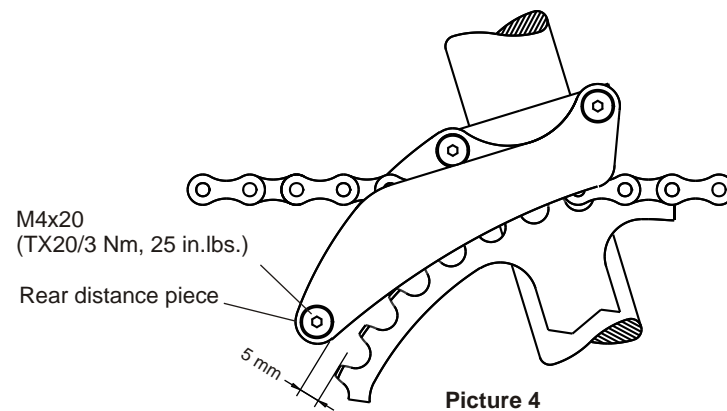
Assemble chain guide with required shims according to picture 3.



Picture 3

Mount the clamps to the seat tube by screwing the cheese-head screws M4x35 through the clamps into the screwed bushes of the premounted chain guide (picture 2). The required clamping diameter is achieved by using the correct reduction sleeve. The reduction sleeve slot should be positioned between the two clamps (picture 2).

Position the chain guide with a distance of 5mm from rear distance piece to chainring teeth (picture 4). Assemble the rear distance piece using cheese-head screw M4x20 and hex nut. Check that distance A is the same in all four positions (picture 2). The chain should run between the two guides. Slight correction might be necessary.



Picture 4